

MINIATURE MANSIONS

How to guide...

CURVE RESIN MOULDINGS

It is quite simple to bend resin moulding around, or into a curve on a dolls house. To illustrate the technique I have used a small piece of plastic tube to form my moulding around.

There are two ways this can be done, directly onto the dolls house or off, working on a bench. **BEWARE - TO BEND RESIN IT NEEDS TO BE HEATED, SO BE CAREFUL** To heat the thick mouldings use a hot air gun (the type used to strip paint) or a hair dryer for thin ones.

Most of our mouldings can be bent, but our two largest ones if bent around a to sharper curve may distort or split.

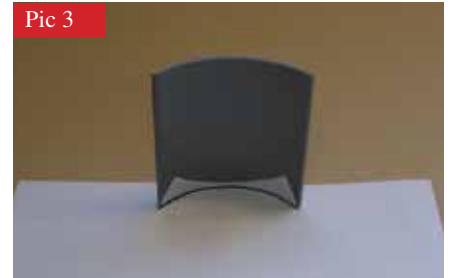
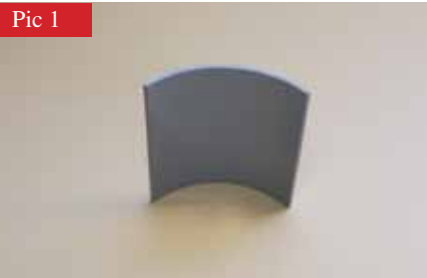
Bending a moulding working off the dolls house

If it is not practical to bend the moulding in situ then a pattern will have to be made to bend around.

Step 1

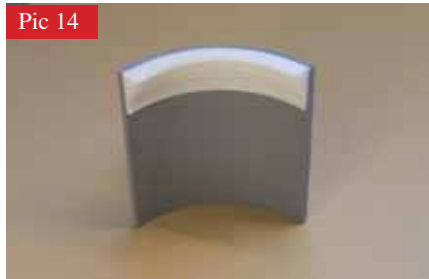
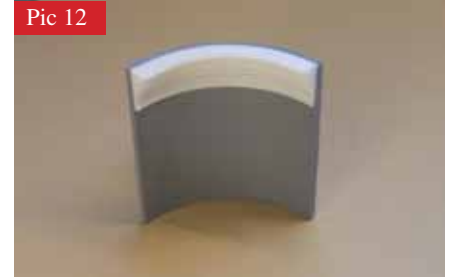
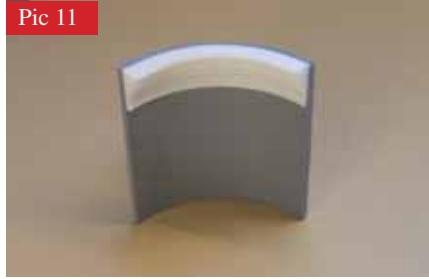
Replicating the shape to be bent around. Cut slots in a piece of paper (photo 1) then place the paper against the feature which is to have the moulding bent around, the slots that have been cut will allow the paper to follow the curve.

With a finger nail make a crease in the paper following the profile of the shape. Carefully draw a pencil line in the crease (photo 2 shows convex curve, photo 3 shows a concave curve). If the shape is concave then the thickness of the moulding must be allowed for. Using the moulding, make a series of dots around the curve marked on the paper template to create another curved line. This is the line to cut to for the concave pattern. (Photos 4, 5 & 6) Accurately with a sharp scalpel or craft knife cut along the pencil line.



CONTACT

Miniature Mansions full range of resin mouldings can be seen on our web site: www.miniaturemansions.co.uk
Here you can download our brochure. Or you can email or phone 07786 397871.



Step 2

Making the pattern. With a piece of MDF that is thicker than the moulding (photo 7) place the paper template onto the M D F and draw around the curve (photos 8 & 9). Draw straight lines which extend further than the curve on each side (photo 10). These straight areas allow the moulding to be held in place without burning the fingers.

Step 3

Cut out the shape that has been drawn on the MDF. Accurately sand the edges smooth to the pencil line (photo 11). This is the pattern the moulding will be bent around. Securely fix the pattern to the bench, good double sided tape will do. The pattern should not move while bending the moulding.

Step 4

Cut a length of moulding longer than is required to go around the curve on the pattern, so your hands will be clear of the heated section.

Step 5

Using the hot air gun gently heat the centre of the moulding. Heat from all sides distributing the heat evenly. Avoid heating one area for too long or leaving cold spots.

Step 6

Once the moulding has become flexible, carefully bend the moulding around the pattern. At this point be careful not to twist the moulding, keep the moulding flat and make sure that it has taken the shape without gaps between it and the pattern (photo 12).

Step 7

Hold the moulding in place until it has cooled down. DO NOT BE TEMPTED TO TOUCH IT AS IT WILL BE HOT. It will depend how hot it was, as to how long it will take to cool down, on average it will take about 2 minutes. If it is removed too soon it will straighten a little and will not fit back without exerting pressure. This will put the fixing under stress, with the effect that it will be difficult to glue in place or, worse still, at some time in the future the stress will break the fixing and the moulding will fall off.

Now leave the moulding to cool off completely before testing the fit in situ. Once cooled, and happy with the fit, cut to the correct length (photos 13 & 14). If this curved section is part of a longer run of moulding then an angle will have to be cut on each end.

The moulding is ready to be painted. Spray the moulding with white car primer as a base coat then finish in the medium of your choice.

If it is possible to bend the moulding directly around or into the feature in the dolls house then proceed from step 4 using the dolls house as the pattern.

CONTACT

Miniature Mansions full range of resin mouldings can be seen on our web site: www.miniaturemansions.co.uk
Here you can download our brochure. Or you can email or phone 07786 397871.